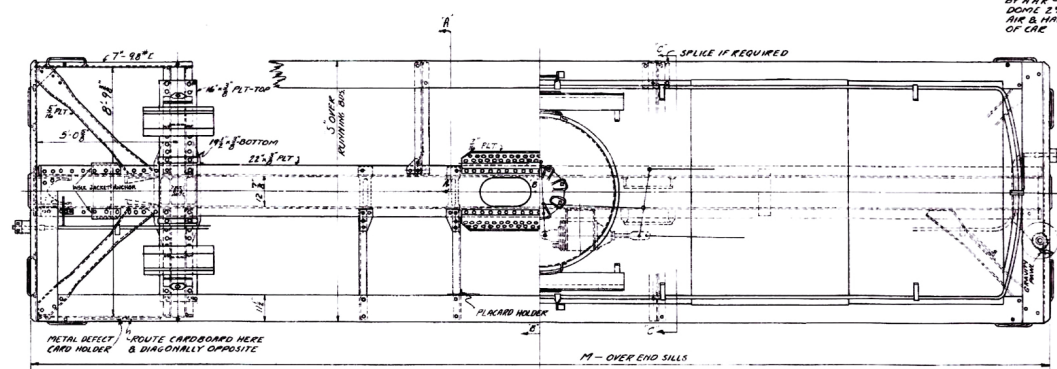
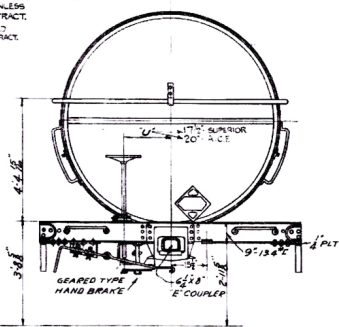
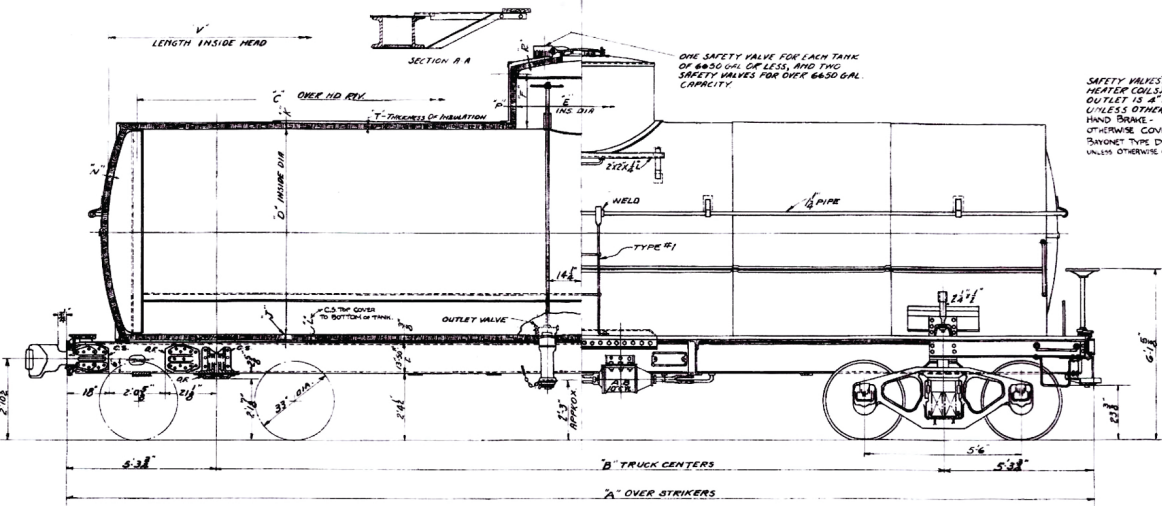
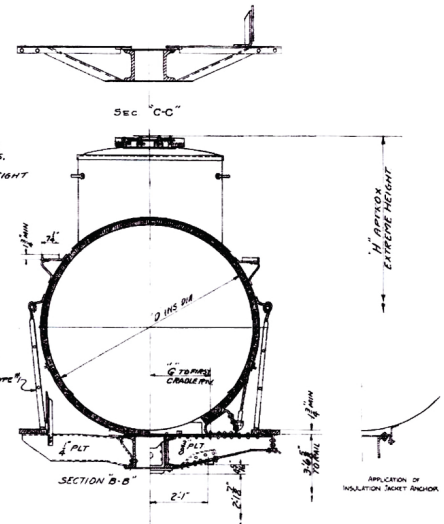


LINE NO.	CAPACITY	A	B	C	D	E	F	G	H	J	K	L	M	N	P	R	S	T	U	V	REMARKS	TYPE OF STRUCTURE	LADDER/STAIRS
1	10,000	36-0 1/2	25-11 1/2	31-0	27 1/2	27	23	18-4	12	1 1/2	1 1/2	1 1/2	1 1/2	1 1/2	1 1/2	1 1/2	1 1/2	1 1/2	1 1/2	1 1/2	SHIPPED CAR LINE LOT 1743 - INSULATION LAYER - 4" DOVE & STEEL JACKETS - & POSITIVE SELF LOCKING DOOR	#1	NO
2	8,000	36-0 1/2	24-2	31-0	27 1/2	27	23	13-6	7 1/2	1 1/2	1 1/2	1 1/2	1 1/2	1 1/2	1 1/2	1 1/2	1 1/2	1 1/2	1 1/2	1 1/2	SHIPPED CAR LINE LOT 1744 - INSULATION LAYER - 4" DOVE & STEEL JACKETS - & POSITIVE SELF LOCKING DOOR	#1	NO
3	8,000	36-3 3/4	25-8 1/2	31-0	27 1/2	27	23	13-2 1/2	7 1/2	1 1/2	1 1/2	1 1/2	1 1/2	1 1/2	1 1/2	1 1/2	1 1/2	1 1/2	1 1/2	1 1/2	SHIPPED CAR LINE LOT 1745 - INSULATION LAYER - 4" DOVE & STEEL JACKETS - & POSITIVE SELF LOCKING DOOR	#2	NO
4	10,000	36-3 3/4	25-8 1/2	31-0	27 1/2	27	23	14-0 1/2	7 1/2	1 1/2	1 1/2	1 1/2	1 1/2	1 1/2	1 1/2	1 1/2	1 1/2	1 1/2	1 1/2	1 1/2	SHIPPED CAR LINE LOT 1746 - INSULATION LAYER - 4" DOVE & STEEL JACKETS - & POSITIVE SELF LOCKING DOOR	#2	NO
5	10,000	36-0 1/2	25-11 1/2	31-0	27 1/2	27	23	14-0 1/2	7 1/2	1 1/2	1 1/2	1 1/2	1 1/2	1 1/2	1 1/2	1 1/2	1 1/2	1 1/2	1 1/2	1 1/2	SHIPPED CAR LINE LOT 1747 - INSULATION LAYER - 4" DOVE & STEEL JACKETS - & POSITIVE SELF LOCKING DOOR	#1	NO
6	8,000	36-0 1/2	25-11 1/2	31-0	27 1/2	27	23	13-6	7 1/2	1 1/2	1 1/2	1 1/2	1 1/2	1 1/2	1 1/2	1 1/2	1 1/2	1 1/2	1 1/2	1 1/2	SHIPPED CAR LINE LOT 1748 - INSULATION LAYER - 4" DOVE & STEEL JACKETS - & POSITIVE SELF LOCKING DOOR	#1	NO
7	10,000	36-0 1/2	25-11 1/2	31-0	27 1/2	27	23	13-6	7 1/2	1 1/2	1 1/2	1 1/2	1 1/2	1 1/2	1 1/2	1 1/2	1 1/2	1 1/2	1 1/2	1 1/2	SHIPPED CAR LINE LOT 1804-A - INSULATION LAYER - 4" DOVE & STEEL JACKETS - & POSITIVE SELF LOCKING DOOR	#1	NO
8	8,000	36-0 1/2	25-11 1/2	31-0	27 1/2	27	23	12-2 1/2	7 1/2	1 1/2	1 1/2	1 1/2	1 1/2	1 1/2	1 1/2	1 1/2	1 1/2	1 1/2	1 1/2	1 1/2	SHIPPED CAR LINE LOT 2118 - INSULATION LAYER - 4" DOVE & STEEL JACKETS - & POSITIVE SELF LOCKING DOOR	#2	YES
9	6,000	32-7	21-11 1/2	27-0	23 1/2	23	19 1/2	12-2 1/2	7 1/2	1 1/2	1 1/2	1 1/2	1 1/2	1 1/2	1 1/2	1 1/2	1 1/2	1 1/2	1 1/2	1 1/2	SHIPPED CAR LINE LOT 2237 - INSULATION LAYER - 4" DOVE & STEEL JACKETS - & POSITIVE SELF LOCKING DOOR	#2	YES
10	6,000	32-3	21-7 1/2	27-0	23 1/2	23	19 1/2	12-2 1/2	7 1/2	1 1/2	1 1/2	1 1/2	1 1/2	1 1/2	1 1/2	1 1/2	1 1/2	1 1/2	1 1/2	1 1/2	SHIPPED CAR LINE - LAYER 2 - INSULATION 4" DOVE & STEEL JACKETS - & POSITIVE SELF LOCKING DOOR	#2	YES

(Not to Scale)



CARS CONFORM TO ALL REQUIREMENTS BY A.R.R. - I.C.C. - BUREAU OF EXPLOSIVES. DO NOT EXCEED MINIMUM DIE & HAND SPACE BOX OF LIGHT WEIGHT OF CAR



SAFETY VALVES (USED IF COVERED BY CONTRACT HEATER COALS) OUTLET IS A POSITIVE SELF LOCKING UNLESS OTHERWISE SPECIFIED BY CONTRACT HAND BRAKE - A.C.F. TYPE UNLESS OTHERWISE COVERED BY CONTRACT. SAFETY TYPE DOOR COVER UNLESS OTHERWISE COVERED BY CONTRACT.

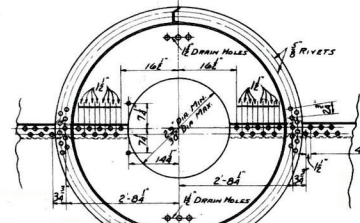
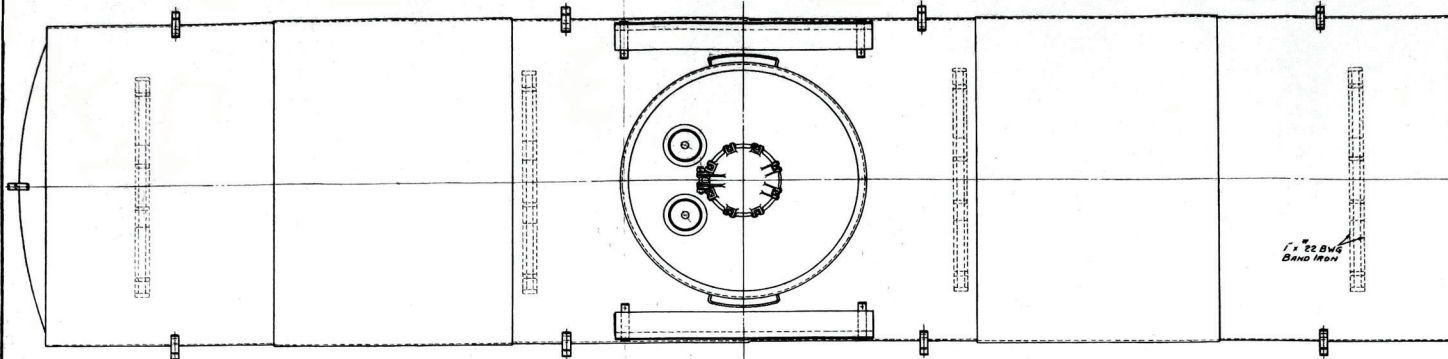
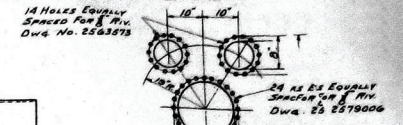
- 1. LINE NO. ADDED
- 2. LINE NO. ADDED
- 3. TYPE #E LADDER ADDED
- 4. LINE NO. ADDED & SINGLE END CHANGED FROM TOP INLOCK
- 5. RUNNING DIAPHRAGM SUPPORT CHANGED
- 6. ANCHOR FOR INSULATION BOX
- 7. (Lot 1804-A) Changed From Line 5 To Line 7. Constructional Joint of Jacket Revised.
- 8. GASKET CHANGE ON MAIN END SUPPORT

AMERICAN CAR AND FOUNDRY CO.

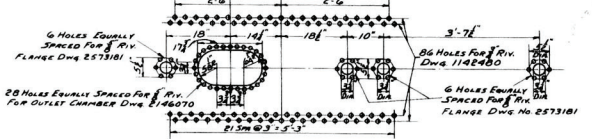
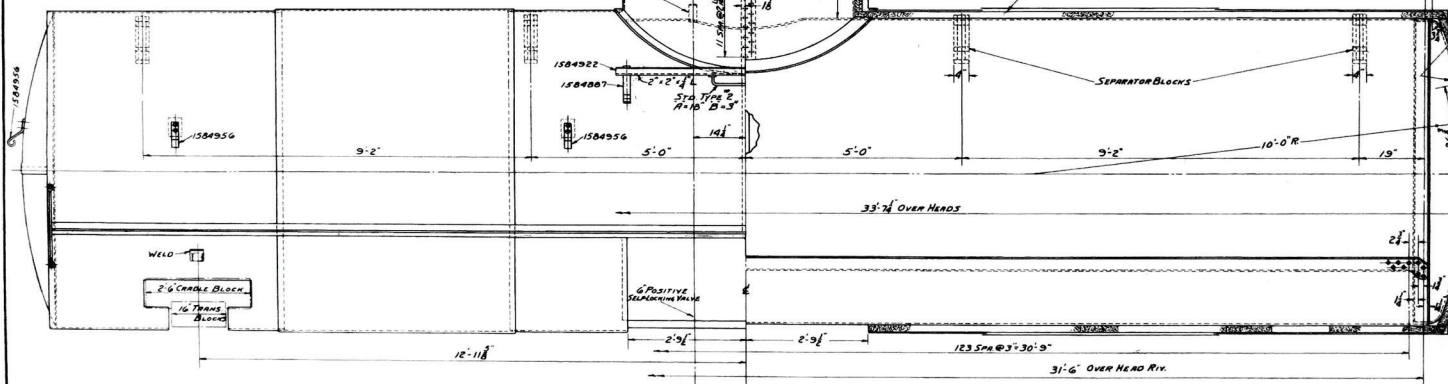
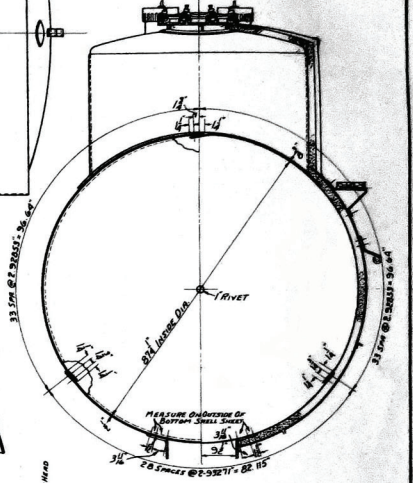
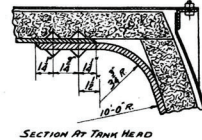
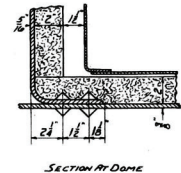
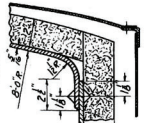
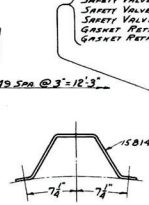
41 48 f36

GENERAL ARRANGEMENT
I.C.C. 103115 TANK CAR
JUNE 10, 1937

(Not to Scale)



- SAFETY VALVE CAGE-----2581177
- SAFETY VALVE FLANGE-----2563573
- SAFETY VALVE STEM-----1141181
- SAFETY VALVE FOLLOWER-----2563551
- SAFETY VALVE SPRING-----1563561
- SAFETY VALVE-----2147083
- GASKET RETAINER-----2583585
- GASKET RETAINER LIFTING EYE-----2579999

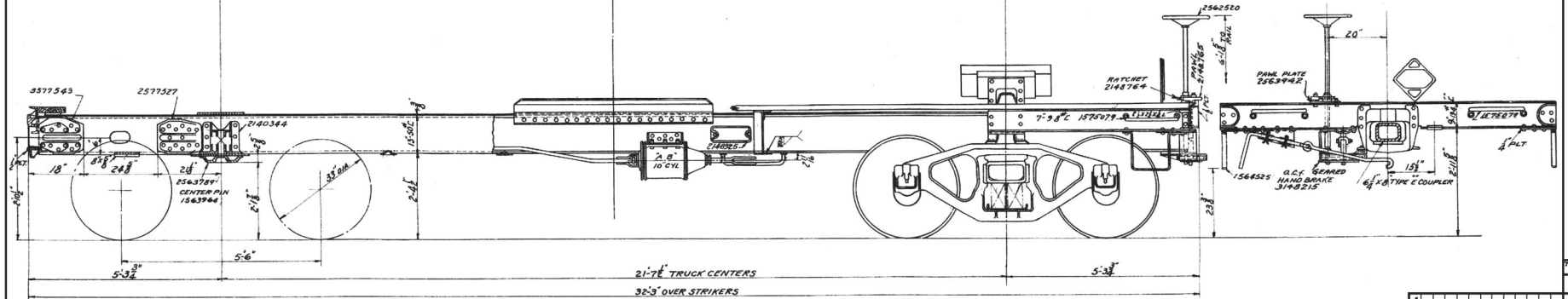
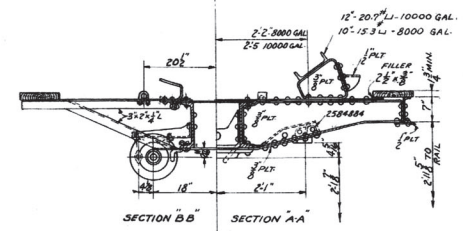
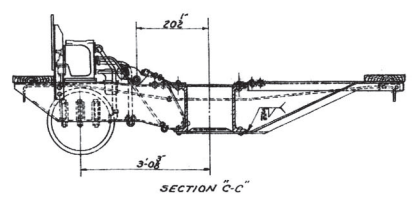
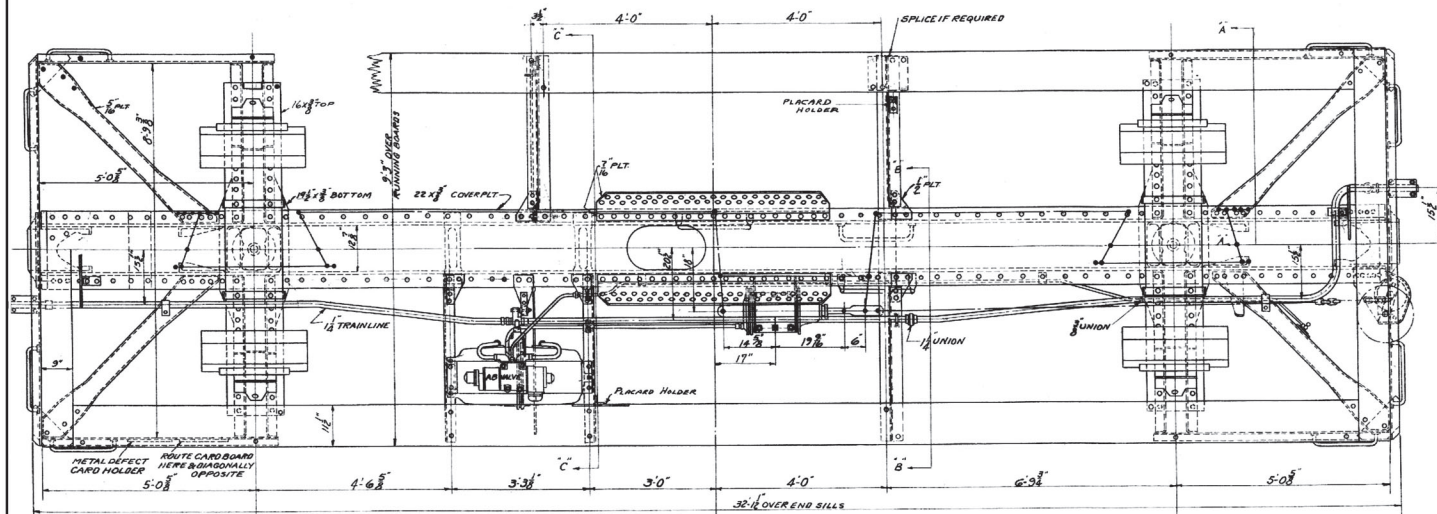


TANK NOTES:
 ALL HOLES FOR 1/2 RIV. UNLESS NOTED.
 ALL JOINTS TO BE CRANKED INSIDE AND OUTSIDE.
 ALL HOLES FOR CASTINGS PUNCHED & SWAMP
 AND REAMED TO FIT.

THE STRUCTURE ILLUSTRATED IN THIS DRAWING IS PATENTED BY THE USE IN A PATENTED STRUCTURE AND SHOULD BE PURCHASED BY AMERICAN CAR AND FOUNDRY COMPANY. THIS DRAWING IS THE PROPERTY OF AMERICAN CAR AND FOUNDRY COMPANY AND MUST NOT BE COPIED OR DUPLICATED.

AMERICAN CAR AND FOUNDRY CO.
 41 49 504
 ARRGT. OF TANK & INSULATION
 10,000 GAL. - 1.C.C.-103140
 MAR 16 1928

AB1
(Not to Scale)

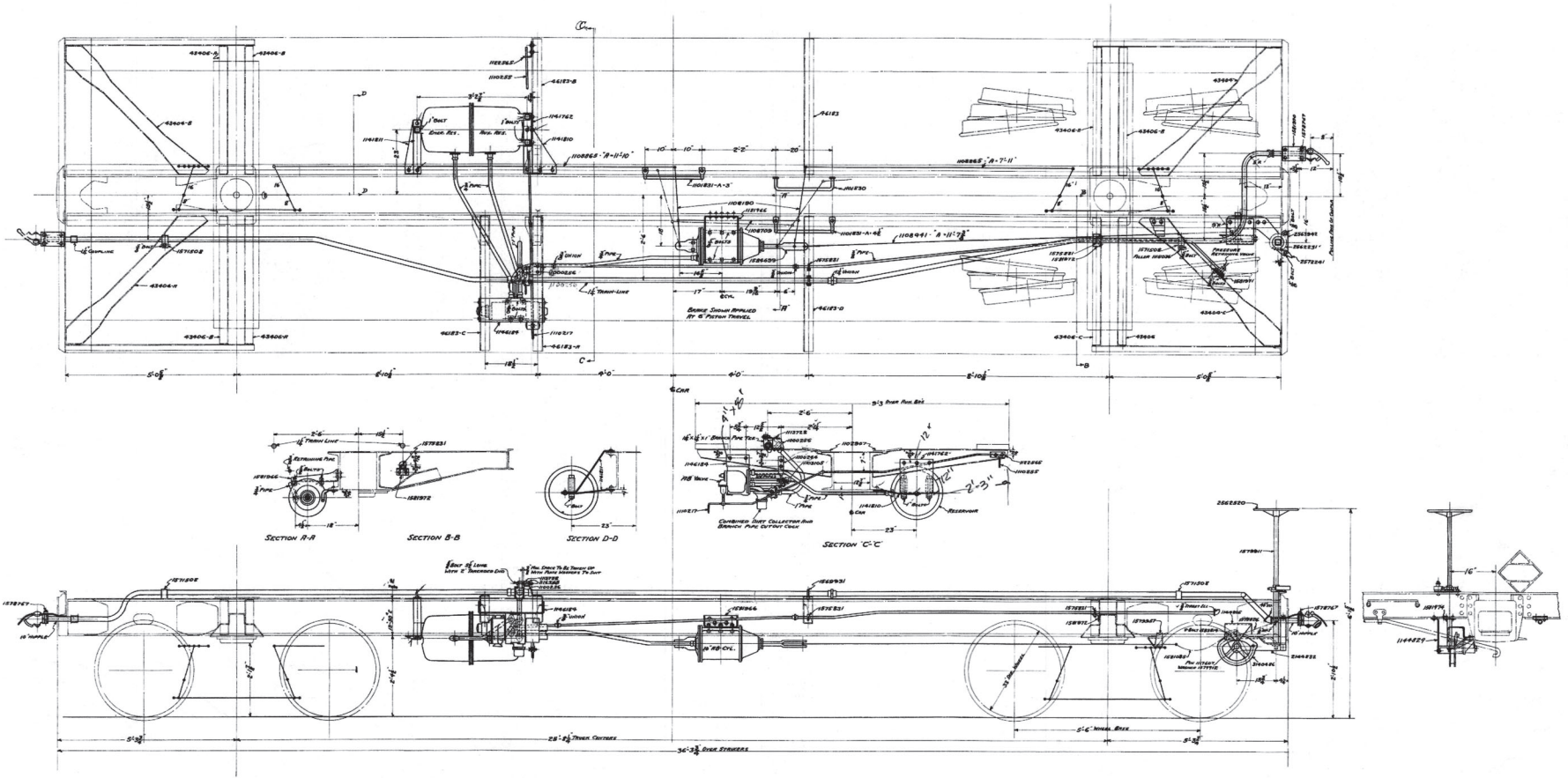


NOTE—
BRAKES SHOWN APPLIED AT 6" PISTON TRAVEL.
WITH NEW SHOES & WHEELS
CYLINDER & FLOATING LEVERS TO BE DRILLED
TO SUIT LIGHTWEIGHT OF CAR PER DWG 1108/70
BRAKE ARRANGEMENT DWG 4154 42 9

AMERICAN CAR AND FOUNDRY CO.

STANDARD UNDERFRAME
TYPE 27 TANK CAR
6/27/29

AB2 (Not to Scale)



All Dimensions - Due to Errors
 Dimensional Errors - Due to Errors
 Dimensional Errors - Due to Errors
 Dimensional Errors - Due to Errors

AMERICAN CAR AND FOUNDRY CO.
 5146 18
 THE SERVICE ARRANGEMENT
 THE SERVICE ARRANGEMENT
 THE SERVICE ARRANGEMENT